

LASH FX EXTENDER

BROW+LASH LINE ENHANCER

BIOSTRATA

INFORMATION

product description

a duo of products tailored to address the volume, length and diameter of lashes and brows

cosmetic features

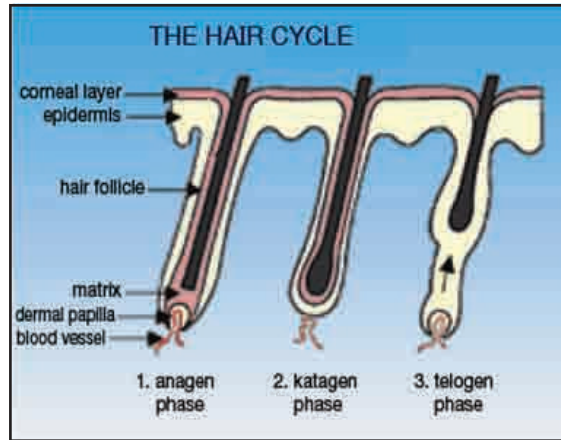
utilizing a blend of exclusive conditioning actives including **biotinyl-GHK**, **panthenol** and **botanical extracts** that help to strengthen and lengthen hair follicles

applications

use for sparse lashes and brows prone to weak follicles and breakage

recommended usage

LASH FX EXTENDER Lengthening Primer:
apply in the day prior to mascara
 Brow+Lash Line Enhancer Root Conditioning Serum:
apply at night after skin care regime. can be used concurrently layered with LASH FX EXTENDER



how does hair grow?

眼睫毛的生長週期
 the hair growth cycle

- 1 anagen phase
- 2 katagen phase
- 3 telogen phase

Anagen Phase - Growth Phase 30-45 days
 生长期阶段-增长阶段30-45天

Catagen Phase - Transitional Phase 14-21 days
 過渡期阶段14-21天

Telogen Phase - Resting Phase - Approximately 100 days
 休止期-静止期约100天。

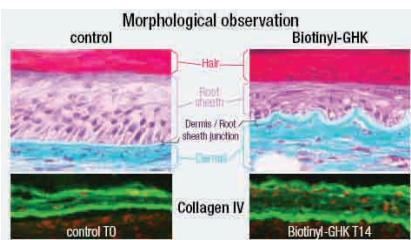
Hair falls and new hair will grow.
 眼毛会自动脱落和新的眼睫毛会再生长。

multi-targeting actives | biotinyl-GHK | panthenol | botanical extracts

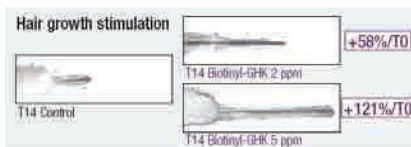
that work to naturally enhance lashes for:

- 3 times more volume!
- length +17% up to 43%!
- diameter +19% up to 40%!

high efficacy actives



Picture shows the changes of the dermis/root sheath junction that indicates thicker growth and enhanced cell proliferation.



In Vitro Tests

Picture shows hair growth stimulation with BIOTINYL GHK at 14 days with a significant increase of +121%.



before and after 30 days
lashes are visibly lengthened and strengthened

INFORMATION

product description

a root conditioning serum that improves hair anchorage and restores follicle quality

applications

use for sparse brows and lashes prone to loss and breakage

recommended usage

apply both day and night after skin care regime. can be used concurrently layered under
LASH FX EXTENDER.

day/night

INFORMATION

product description

a lash lengthening primer formulated with actives that help to stimulate and enhance cellular regeneration while visibly strengthening and lengthening lashes

botanica extracts of:

- ginseng
- calendula (marigold)
- green tea

provide anti-oxidant, soothing and conditioning benefits for longer, thicker and healthier lashes

applications

use for sparse lashes prone to weak follicles and breakage

recommended usage

apply in the day prior to mascara. apply at night after skin care regime after
Brow+Lash Line Enhancer

day/night

BIOSTRATA

1 | encourage cell proliferation at the root

BROW+LASH LINE ENHANCER root conditioning serum

multi-targeting actives biotinyl-GHK | panthenol | apigenin | oleanolic acid | procysteine

that work to:

- reduce dna oxidative damage
- condition and smoothen follicles
- protects and prevents thinning and breakage

1



day and night

2



day and night

2 | promotes lash growth

LASH FX EXTENDER lengthening primer

multi-targeting actives biotinyl-GHK | panthenol | botanical extracts

that work to naturally enhance lashes for:

- 3 times more volume!
- length +17% up to 43%!
- diameter +19% up to 40%!

