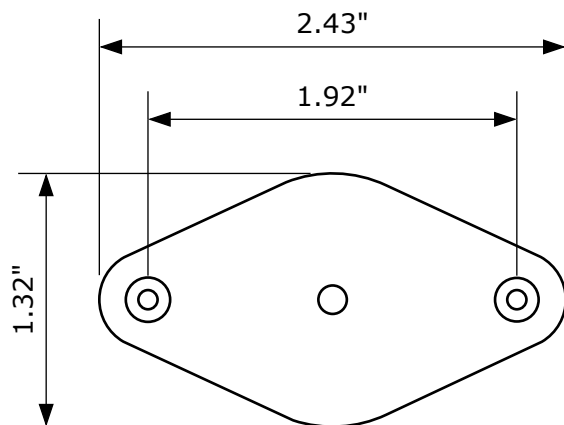


I recommend the Ram Mounts for mounting your box, and please use this template for a guide on proper attachment:



## Ram Mount Template -

RAM-B-166U

RAP-105-6DR

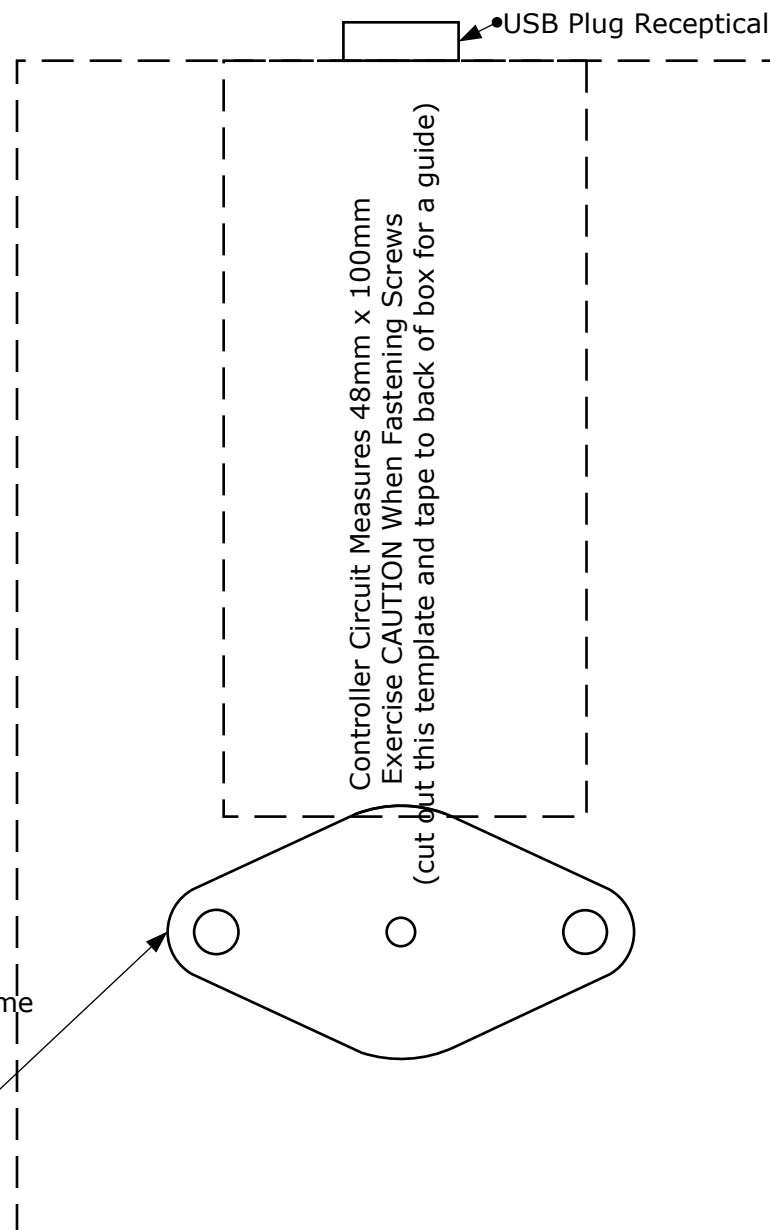
RAM-B-138U

RAP-B-104U

RAM-B-231ZU - if you have an Obutto, this will clamp to the frame

<http://www.ram-mount.com>

THIS INDICATES THE SAFEST PROXIMITY TO THE CIRCUIT



Please note that you are responsible for all drilling and mounting - I want you to have the very best experience with your box!

Use screws NO LONGER than 1/2" or 12mm

(C)2011 - Derek Speare Designs  
No distribution without permission