

Bay Area Flood Protection Agencies Association

6th Annual Meeting
February 21, 2013

By Mitch Avalon
Deputy Chief Engineer
Contra Costa County Flood Control District

Overview

- Needs Assessment
- Seal Level Rise
- Sediment
- Delta
- Stormwater Quality
- Legislation
- BAFPA Role



**Grayson Creek Flooding
April 1958**

Flood Protection Needs Assessment

- **DWR Report**
- **Where do we go from here?**
- **Flood Protection System Needs**
 - **Capital Replacement**
 - **Upgrade inadequate system components**
 - **System expansion**
- **Promotion opportunity for Flood Control**



**Pine Creek Flooding April
2, 1958**

Aging Infrastructure

- **Capital Replacement Funding**
- **50 Year Plan**
- **Disadvantaged communities**
- **Unequal funding resources countywide**



San Ramon Drop Structure

Level of Service

- 100? 200? Less?
- Community Design vs. Funding Capacity
- Reduction over time (Pinole Creek)



Ellinwood Creek
(Walnut Creek remnant) •

Federal Partnership

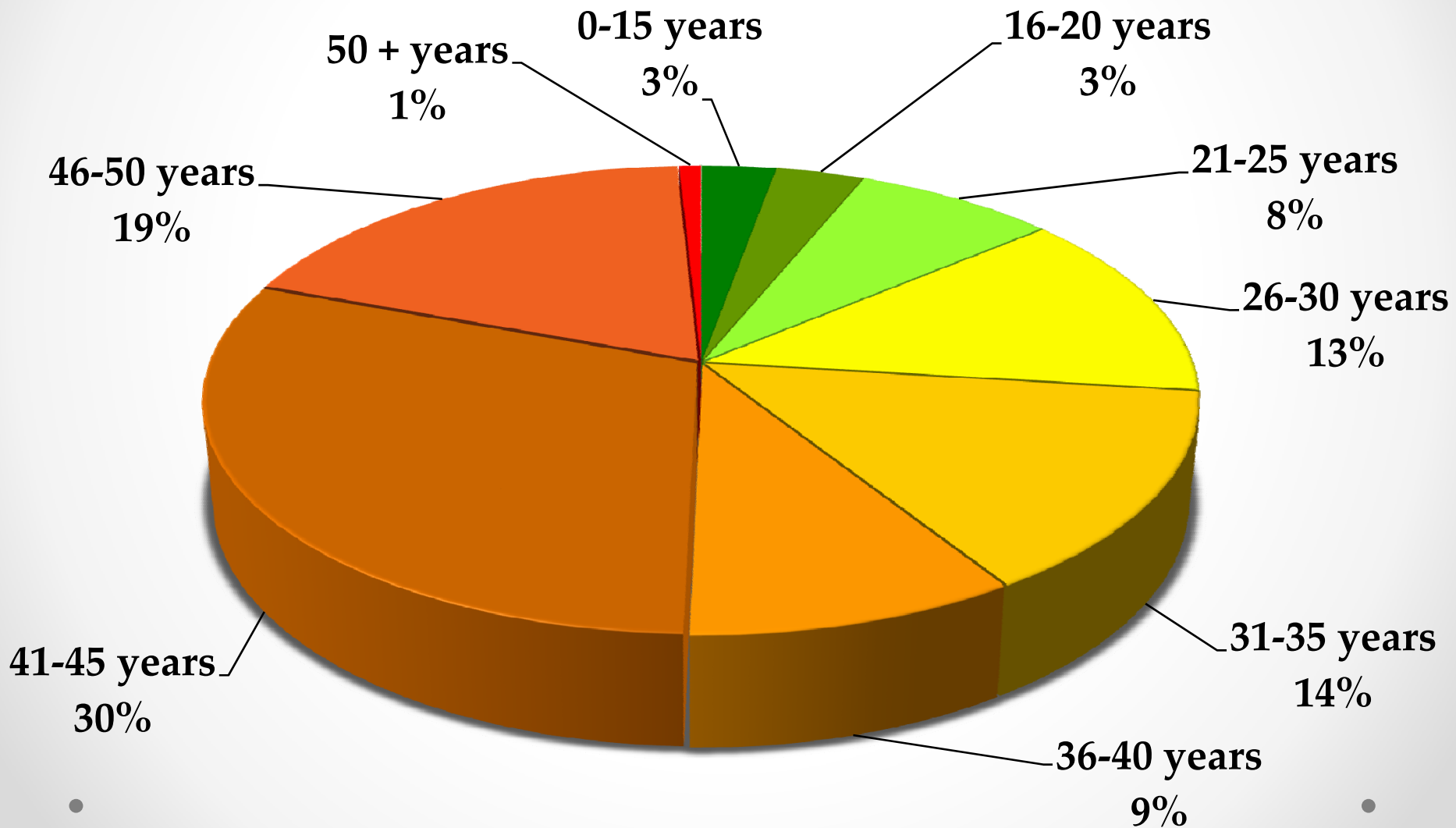
- **Federal participation essential**
- **Is the current partnership working?**
- **Deauthorization of Lower Walnut Creek**
- **Need a new Corps/NRCS program / process**



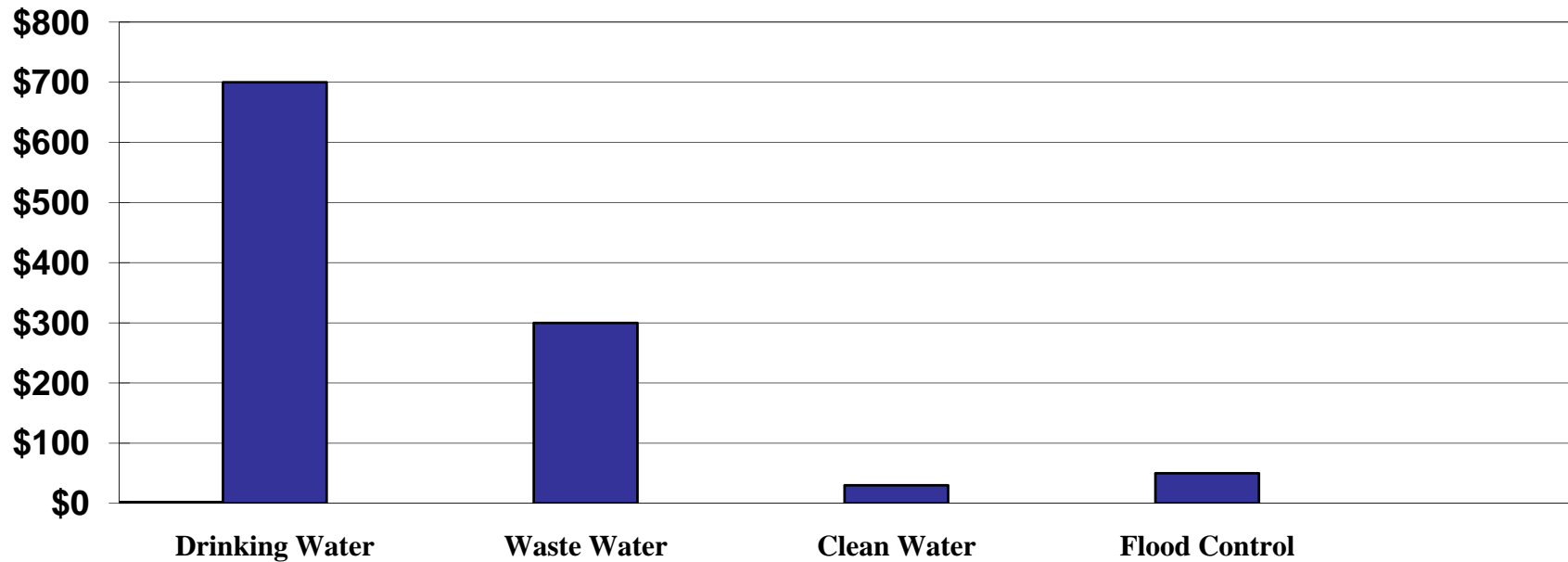
Grayson Creek Channel

Infrastructure

Value and Age in 2010 Dollars



Contra Costa Stormwater Payments



Average annual residential cost for water-related services

Sea Level Rise and Low Lying Communities

- **Low energy/low gradient reach will expand**
- **System expansion with Sea Walls?**
- **Community Design and Reasonable Protection**
- **BCDC projects**
- **Handy Dandy Handout**



Alhambra Creek Beaver Dam

Sediment

- **Multi-agency approach**
- **More research**
- **Impacts from the Delta**
- **Delta outflows/Bay inflows**
- **Conflicting policy objective (good sediment/bad sediment)**



Lower Pinole Creek

Delta Impact

- **BDCP alternative**
- **IRWMP impacts**
- **Water Bond**
 - **Outside Delta Projects**
 - **Local Roads/Local Drainage**



Marsh Creek Reservoir

Stormwater Quality Issues

- **Receiving Water Limitations**
- **Los Angeles NPDES Permit**
- **Permit Reissuance**
- **North Richmond Stormwater Pump Station**



San Ramon Creek Bypass @ Walnut Creek Civic Park, January 2006

Legislation/Funding Opportunities

- **Stormwater Fee**
- **County Engineers Association of California**
- **San Francisco Bay Restoration Authority and JPC**



**San Ramon Creek @ Livorna Rd,
Alamo January 2006**

Marketing

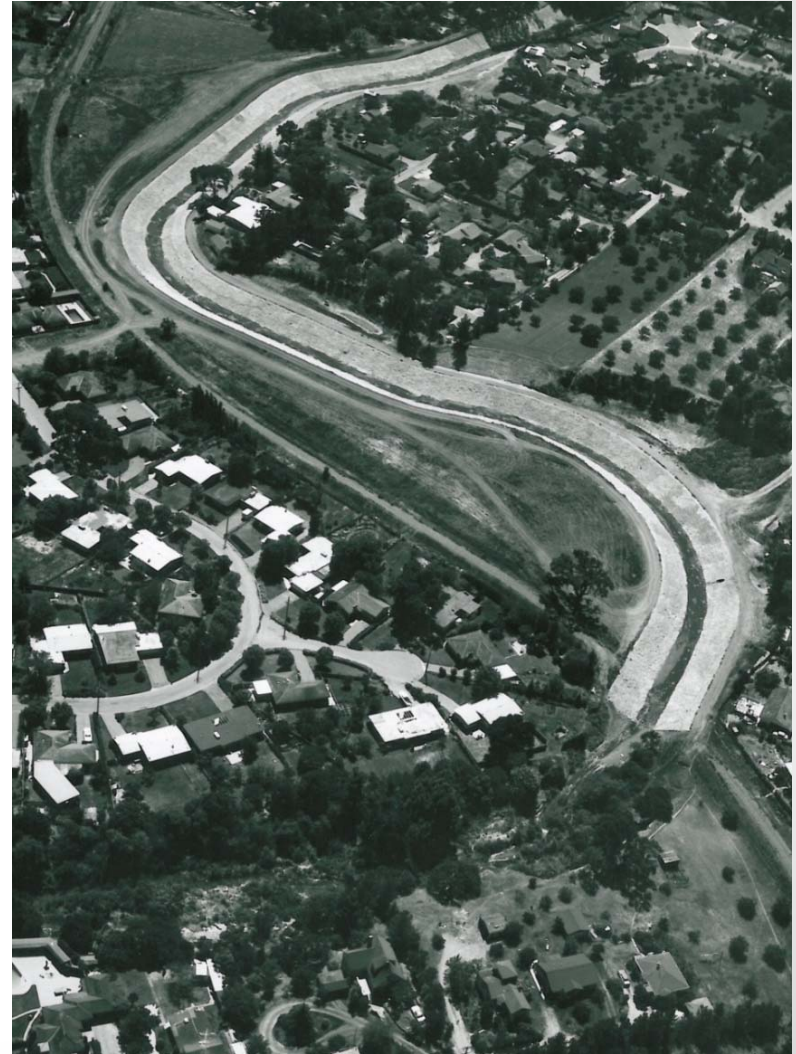
- Who we are
- What we do
- Develop our champions
- Media moments/opportunities
- Regional message?



Downtown San Luis Obispo

BAFPAA Role

- **Sea Level Rise information exchange**
- **San Francisco Bay Restoration Authority**
- **CEAC Vice Chair**
- **Marketing**



Las Trampas Creek 1960